



# Low-angle Square Lights

## FPQ2 Series

### Even, diffused side lighting

Low-angle, diffuse illumination enables characters and defects to be uniformly illuminated with no LED glare.



#### High-output Low-angle Light Unit

This square-shaped Light Unit was developed with a high shutter speed and low angle, while still maintaining a high output.

Previous Model: FPQ series (Red)



Shutter speed: 1/1,000 sec.  
Light intensity: 100% dimming

FPQ2 series (Red)



Shutter speed: 1/1,000 sec.  
Light intensity: 100% dimming

#### Perfect Compact Size for Extremely Small Parts

The 20 x 20-mm compact size of this Light Unit makes it perfect for chip parts, integrated circuits, and other extremely small parts.

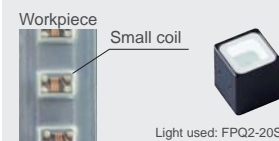


Imaging example: Imaging exterior of a coil



The entire outer surface of the coil is irradiated uniformly.

Field of View: 2.4x1.8mm



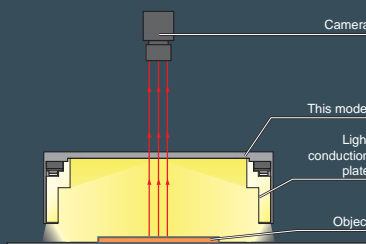
#### A Lineup of Light Units for a Wide Range of Applications

Select from six sizes: 20 x 20 mm, 32 x 32 mm, 48 x 48 mm, 75 x 75 mm, 96 x 96 mm, or 120 x 120 mm. There is a selection of three LED light colors: red, white, and blue. The lineup offers 18 size and color combinations.



#### Illumination structure of FPQ2-96

The object is illuminated from a low angle by uniform diffuse light through the light conduction plate.



#### Examples of low-angle Square Light images

##### Imaging Exterior of Food Packs

The entire outer surface of the square-shaped pack is uniformly illuminated.

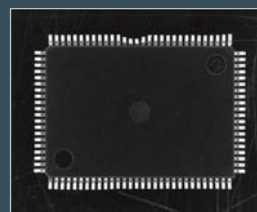
Light used: FPQ2-96RD



##### The lead of the IC is uniformly illuminated

The lead of the IC is uniformly illuminated.

Light Unit used: FPQ2-75SW



##### Imaging Exterior of Food Products

Even the entire surface of this rounded shape is illuminated uniformly.

Light used: FPQ2-75SW



## Product Lineup Table

Series	Direct Number	Model Name	Color	Power Consumption	Option	Dimension
FPQ2	1005263	FPQ2-20RD	●	24V / 1.5W	—	1
	1005264	FPQ2-20SW	○	24V / 2.6W		
	1005265	FPQ2-20BL	●	24V / 1.8W		
	1005266	FPQ2-32RD	●	24V / 6.1W	—	2
	1005267	FPQ2-32SW	○	24V / 5.1W		
	1005268	FPQ2-32BL	●	24V / 3.1W		
	1005269	FPQ2-48RD	●	24V / 5.8W	—	3
	1005270	FPQ2-48SW	○	24V / 11W		
	1005271	FPQ2-48BL	●	24V / 7.1W		
	1005272	FPQ2-75RD	●	24V / 17W	—	4
	1005273	FPQ2-75SW	○	24V / 16W		
	1005274	FPQ2-75BL	●	24V / 9.1W		
	1005275	FPQ2-96RD	●	24V / 15W	—	5
	1005276	FPQ2-96SW	○	24V / 21W		
	1005277	FPQ2-96BL	●	24V / 13W		
	1005278	FPQ2-120RD	●	24V / 18W	—	6
1005279	FPQ2-120SW	○	24V / 21W			
1005280	FPQ2-120BL	●	24V / 11W			

## Dimension Diagrams (Unit: mm)

